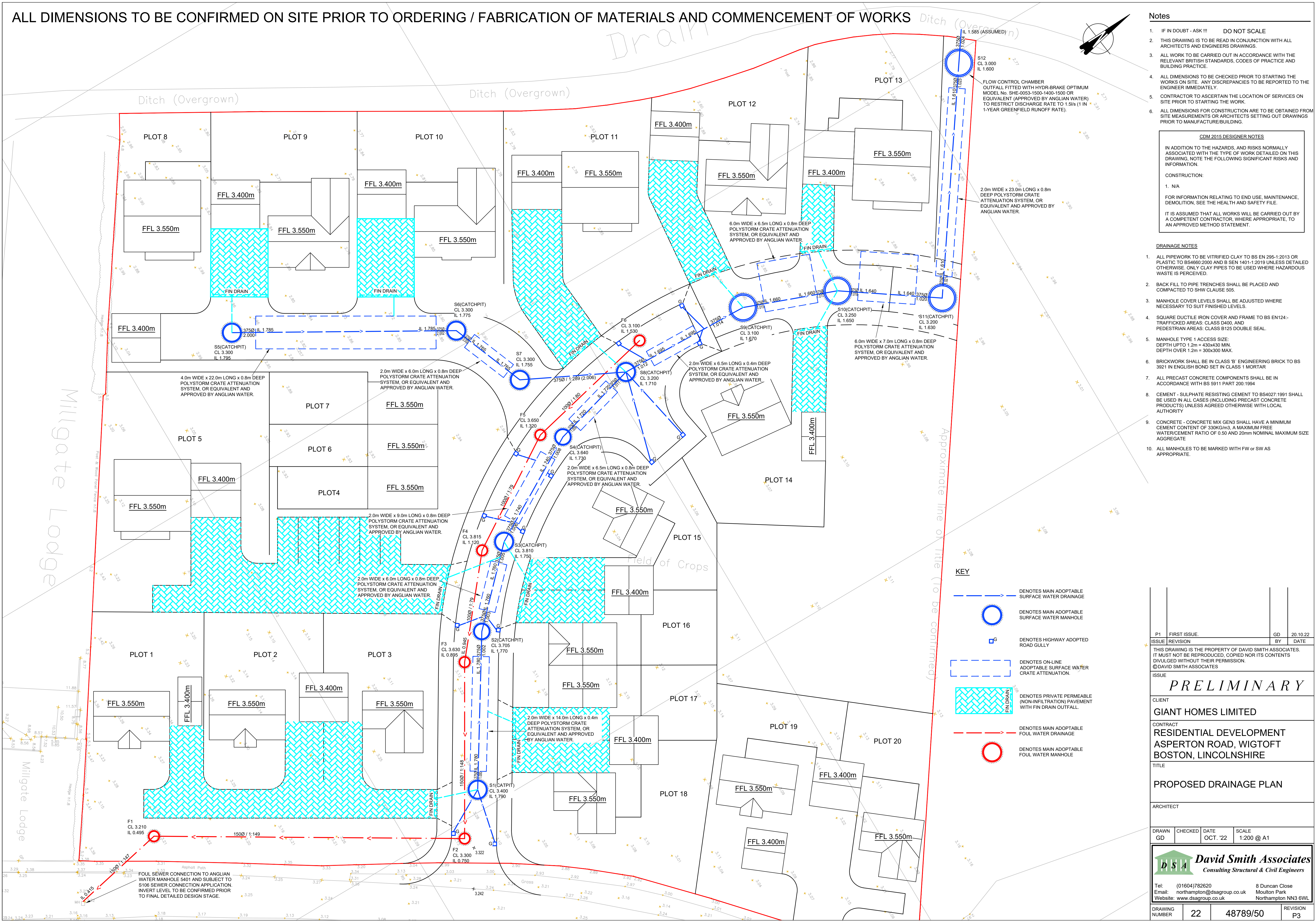


ALL DIMENSIONS TO BE CONFIRMED ON SITE PRIOR TO ORDERING / FABRICATION OF MATERIALS AND COMMENCEMENT OF WORKS



- Notes**
- IF IN DOUBT - ASK !!! DO NOT SCALE
 - THIS DRAWING IS TO BE READ IN CONJUNCTION WITH ALL ARCHITECTS AND ENGINEERS DRAWINGS.
 - ALL WORK TO BE CARRIED OUT IN ACCORDANCE WITH THE RELEVANT BRITISH STANDARDS, CODES OF PRACTICE AND BUILDING PRACTICE.
 - ALL DIMENSIONS TO BE CHECKED PRIOR TO STARTING THE WORKS ON SITE. ANY DISCREPANCIES TO BE REPORTED TO THE ENGINEER IMMEDIATELY.
 - CONTRACTOR TO ASCERTAIN THE LOCATION OF SERVICES ON SITE PRIOR TO STARTING THE WORK.
 - ALL DIMENSIONS FOR CONSTRUCTION ARE TO BE OBTAINED FROM SITE MEASUREMENTS OR ARCHITECTS SETTING OUT DRAWINGS PRIOR TO MANUFACTURE/BUILDING.
- CDM 2015 DESIGNER NOTES**
- IN ADDITION TO THE HAZARDS, AND RISKS NORMALLY ASSOCIATED WITH THE TYPE OF WORK DETAILED ON THIS DRAWING, NOTE THE FOLLOWING SIGNIFICANT RISKS AND INFORMATION.
- CONSTRUCTION:**
- N/A
- FOR INFORMATION RELATING TO END USE, MAINTENANCE, DEMOLITION, SEE THE HEALTH AND SAFETY FILE.
- IT IS ASSUMED THAT ALL WORKS WILL BE CARRIED OUT BY A COMPETENT CONTRACTOR, WHERE APPROPRIATE, TO AN APPROVED METHOD STATEMENT.

- DRAINAGE NOTES**
- ALL PIPEWORK TO BE VITRIFIED CLAY TO BS EN 295-1:2013 OR PLASTIC TO BS4660:2000 AND BS EN 1401-1:2019 UNLESS DETAILED OTHERWISE. ONLY CLAY PIPES TO BE USED WHERE HAZARDOUS WASTE IS PERCEIVED.
 - BACK FILL TO PIPE TRENCHES SHALL BE PLACED AND COMPACTED TO SHW CLAUSE 505.
 - MANHOLE COVER LEVELS SHALL BE ADJUSTED WHERE NECESSARY TO SUIT FINISHED LEVELS.
 - SQUARE DUCTILE IRON COVER AND FRAME TO BS EN124- TRAFFICKED AREAS: CLASS D400, AND PEDESTRIAN AREAS: CLASS B125 DOUBLE SEAL.
 - MANHOLE TYPE 1 ACCESS SIZE: DEPTH UPTO 1.2m = 430x430 MIN. DEPTH OVER 1.2m = 300x300 MAX.
 - BRICKWORK SHALL BE IN CLASS 'B' ENGINEERING BRICK TO BS 3921 IN ENGLISH BOND SET IN CLASS 1 MORTAR
 - ALL PRECAST CONCRETE COMPONENTS SHALL BE IN ACCORDANCE WITH BS 5911 PART 200:1994
 - CEMENT - SULPHATE RESISTING CEMENT TO BS4027:1991 SHALL BE USED IN ALL CASES (INCLUDING PRECAST CONCRETE PRODUCTS) UNLESS AGREED OTHERWISE WITH LOCAL AUTHORITY
 - CONCRETE - CONCRETE MIX GEN3 SHALL HAVE A MINIMUM CEMENT CONTENT OF 330KG/m³, A MAXIMUM FREE WATER/CEMENT RATIO OF 0.50 AND 20mm NOMINAL MAXIMUM SIZE AGGREGATE
 - ALL MANHOLES TO BE MARKED WITH FW OR SW AS APPROPRIATE.

P1	FIRST ISSUE.	GD	20.10.22
ISSUE	REVISION	BY	DATE
THIS DRAWING IS THE PROPERTY OF DAVID SMITH ASSOCIATES. IT MUST NOT BE REPRODUCED, COPIED NOR ITS CONTENTS DIVULGED WITHOUT THEIR PERMISSION. ©DAVID SMITH ASSOCIATES			
ISSUE	PRELIMINARY		
CLIENT	GIANT HOMES LIMITED		
CONTRACT	RESIDENTIAL DEVELOPMENT ASPERTON ROAD, WIGTOFT BOSTON, LINCOLNSHIRE		
TITLE	PROPOSED DRAINAGE PLAN		
ARCHITECT	David Smith Associates Consulting Structural & Civil Engineers		
DRAWN	CHECKED	DATE	SCALE
GD	GD	OCT. '22	1:200 @ A1
DRAWING NUMBER	22	48789/50	REVISION P3